

A Place of worship, service and nurture for God's people of all ages

September 2010

Table of Contents	
Birthdays	1
Anniversaries	1
Church Events	1
Pastor's Perspective	2
Building & Grounds	3
Happenings:	4-5
At church	4
In Presbytery	4-5
In community	5
Christian Education	6-7
Health Ministry	6
Session structure	8
Kids Page	9
Youth Service Project	10

September Birthdays

Phil Armstrong	9/5
Travis Babikoff	9/8
Janice Armstrong	9/14
Bob Poore	9/19
Samantha Sturman	9/19
Erin Roden	9/24
Morgan Driskell	9/24
Philip Rigby	9/26



Anniversaries

Joseph & Traci Hauck	9/5
Kathleen & Vernon Souders	9/8

Fall Sunday Schedule

9:30 AM Sunday School (begins Sept. 19)
10:15 AM Hymn Sing
10:30 Worship
11:15 Fellowship
Deadline for next newsletter:
September 20

Howdy Pardners! It's time for the Round Up!



September 12, join us for worship at 10:30
(10:15 for hymn sing), and a potluck after church.

Learn about our exciting Sunday school offerings for the fall.

Church Events in September

- September 9: session, 6:00
- September 11: Youth Group service project, painting the basement
- September 12: Round Up (Commissioning of teachers, celebration of communion; potluck following the service)
- September 18: St Mark Presbyterian Church using our building and grounds for a session retreat
- September 19: Service of Blessing the Animals
- September 22: Knit Night, 4:30
- October 3: World Communion Sunday (the congregation is encouraged to wear international clothing)

Pastor's Perspective

Does History Repeat Itself?

I've been reading our church records. In seminary, I had been told that it was good practice to read historical session minutes, but our centennial history book was much more engaging reading, so I didn't get around to the session minutes for ten years.

Springwater's written history begins on March 31, 1897, with volume 2 of the session minutes. We're not sure, but we think volume 1 perished in the 1902 Hillockburn fire. Much of session's business 1897 to 1923 was taken up with hiring a pastor, and receiving or dismissing members. In 1919, the first member personally known by me was received into membership, Bill Shearer.

Patterns Develop Early

Reading through the minutes, I learned that our congregation was supported by the denomination for years and that we have a history of allowing the pastor to do everything. This may or may not be related to the short tenure of pastors and the years without any pastor at all.

Our membership and worship attendance numbers haven't changed much, nor was it ever easier to get elders to serve. You knew that some people had died because they were no longer serving on session. It has always taken a long time to get things done, and repairs aren't usually done until conditions are deemed unsafe.

The 1902 fire received a great deal of attention, with several resolutions to thank churches and individuals for coming to our aid. What surprised me, was that no mention was made of the 1918 Spanish influenza epidemic. I knew (from that member who joined in 1919) that Springwater did not have a single case of Spanish influenza, because the community isolated itself and did not allow anyone in or out.

Learning from the Past

But what is the implication for how we think of our mission as a church, that this congregation did not acknowledge the disease that killed more people than the Great War? Does history repeat itself, as some historians say? Are we to be taught by our past, or are we condemned to repeat it?

My friend Julia divides all jobs into two types: retail and food service. This is important to know, because she says there are only two types of people: those who are good at retail, those who are good at food service. Retail people, she says, ought not to do food service and vice versa.

Reading through the minutes, I learned that ... we have a history of allowing the pastor to do everything.

Within our corporate mission as a church, there are plenty of opportunities to find out whether you are “food service” or “retail.”

This may be a simplistic way to look at the world, but there is some truth to it. Perhaps we could think of churches in the same way. Retail churches think of themselves in terms of evangelism and programs. Food service churches think of themselves in terms of worship, fellowship, mission.

Springwater might be a food service church. This doesn't condemn us to repeat the past, but it might help us define our mission more clearly. That the pastor thinks this is a “food service church” doesn't mean that “retail people” need to find “retail churches.” For one thing, she might not be right! I speak of the corporate expression of our mission, not of individuals. In order to be a corporate body, as the apostle Paul says, we need people of all kinds—“food service people” are necessary in “retail churches” and vice versa.

Within our corporate mission as a church, there are plenty of opportunities to find out whether you are “food service” or “retail.” Every one of those opportunities will contribute to the corporate expression of God's call to Springwater. As we begin another year, consider where you might want to contribute.

See you in church.

Building & Grounds

The building & grounds team has been busy with windows. Thanks to some generous donations the fellowship hall has new, insulated windows. The east and south windows in the sanctuary are covered with storm windows. The team is now getting bids to replace the basement windows and to cover the north window in the sanctuary with a storm window. Our winter may be a bit warmer, and our heating costs a bit lower, thanks to our new windows. Thank you for your generous donations.



Happenings at our church, in the Presbytery, in the community

Blessing the Animals

You are invited to bring your caged and leashed animals to worship on September 19 to receive a blessing. A special focus for this service is a public expression of the bond we have with animals. Those animals who are present will receive a blessing, as will animals who are not present. Bring photographic representations or stuffed animals. In particular, this year we will recognize and ask God's care for the 1,300-plus species of animals threatened by the Gulf Oil catastrophe.

The Springwater Grange fair will be the day immediately preceding this event, so you are also encouraged to bring extra fall produce to adorn the sanctuary for worship. The produce will then be brought to the Estacada Area Food Bank for distribution to hungry people.

Protestant Christians Share Life in Mid-East

Have you wondered about the life of Protestant Christians in the Middle East? What is it like for Christians to worship, work, and live in peace with their neighbors in Syria, Turkey, Iran, Iraq, Jordan, Israel, Palestine, Egypt, Lebanon? You have the opportunity to learn more on Thursday, September 9 at 1:30 at Colonial Heights Presbyterian Church in Portland, as Dr. Mary Mikhael speaks.

Dr Mikhael is president of the Near East School of Theology (NEST), the oldest Christian seminary in the Middle East. Training leaders in the Reformed faith tradition since 1835 in Turkey and Athens, it is now located in Beirut, Lebanon. Dr Mikahel has been on the NEST faculty since 1984 and became the first woman president in 1994. Deeply concerned about women's issues, particularly the role of women in Christian ministry and as decision-makers in society, she is the author of the Presbyterian Women's Horizon Bible Study on Joshua for 2010.

Colonial Heights Presbyterian Church is located at 2828 SE Stephens Street, Portland. For more information, contact Pastor Linda Stewart-Kalen at 503/236-2430.

Deacon Notes

- Prayer Time with the Deacons has resumed on Fridays at 10:00am. Please join us in the Fellowship Hall.

- We will be training people to use Amazon.com to earn donations for Springwater Church. There will be a training video shown after worship this fall. There are also CDs / DVDs that you can take home so that you can see how to make this happen every time you shop Online.

Directory change:

Please note this in your church directory: Debbie Ingamells new phone number 503-313-9575.

Have you seen this book?

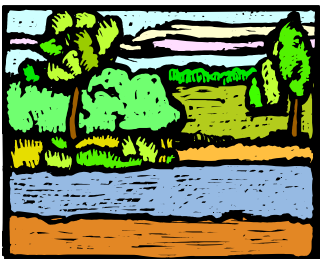
Wilma Guttridge is missing the book, *Clearing In the Wild* by Jane Kirkpatrick. If you have it, please return it to her.

COMPASSION ESTACADA

On October 23, the 2010 Estacada Compassion Connect clinic, will be held at Estacada High School, from 9-3pm. Volunteers are invited to participate in this unique opportunity to reach out to the people of our community with the love of Christ. On the day of the event there will be many people who seek medical treatment, after which they will meet with people from the follow up team, for additional resources and prayer, if they desire. After the event, we will be following up with those that request it, and meeting to pray with and for the community as a whole.

The leadership team is looking for a few people who are passionate about meeting the more long term holistic and spiritual needs of those in our community. There are many ways to volunteer and serve, on this day, before and after the event on October 23.

Please pray as volunteers prepare for this event. If you are interested in learning more about Compassion Estacada visit <http://www.compassionconnect.com/work/health.html> or email the volunteer coordinator directly, klady@gmail.com. Pastor Eileen will be there that day, along with other volunteers from our congregation. Will one of them be you?



Workshop Equips and Inspires for Earth Care Ministry

On November 6, congregations are invited to send a team to "Earth Care: Inspiration, Prayer and Action" at Westminster Presbyterian Church, 3737 Liberty Road South, Salem, Oregon. This annual Creation Care event is sponsored by the Presbytery of the Cascades' Eco-Justice Team of Congregational Support. Learn how to green your congregation and make prayer and worship a vital part of the process. Our keynoter is Sam Hamilton-Poore, the Director of the Program in Christian Spirituality and Assistant Professor of Christian Spirituality at San Francisco Theological Seminary, author of *Earth Gospel: A Guide to Prayer for God's Creation*. He is also an ordained minister in the Presbyterian Church, USA and instructor at the Center for Nature and Christian Spirituality at Westminster Woods. Cost: \$25. Seniors and students, \$20. Includes locally grown lunch and guidebook. To Register: Call Dawn at 1-800-926-3223 or go to www.cascadespresbytery.org. Using Earth Care Congregations, a new resource guide and certification program of the Presbyterian Church, USA, the workshops will explore at how to integrate care for creation into all facets of the life of the church.



Christian Education Resumes regular classes

Sunday School resumes on September 19th at 9:30 a.m. There are several exciting classes, with offerings for every age. The youngest group, led by Renate Jeppeson, will focus on engaging in bible stories with their whole being, doing crafts, playing games, listening to and participating in stories. The middle group, led by Deb Odell, will explore their thoughts about bible stories and how they are relevant in their own lives. The youth group will have its own class, too. Adults will begin the fall season led by Eileen. Eileen will teach and lead discussions about several parables. The discussions should be interesting and enlightening.

The ages for children's Sunday school classes are as follows:

- Early Elementary- preschool through second grade
- Junior Youth- third through seventh grade
- Youth Group- eighth grade through high school
- Adults- you know who you are

Class locations to be announced. Please be considering where *you* want to participate, and be praying for the leaders and students.



Recommended Daily allowances by age:

0-6 months	0.3mg/day
7-12 months	0.4mg/day
1-3 years	0.5mg/day
4-8 years	0.6mg/day
9-13 years	0.9mg/day
males 14 and older	1.3mg/day
females:	
14-18 years	1.0mg/day
19 and older	1.1mg/day

Riboflavin, what it is, why you need it

Vitamin B-2, or riboflavin, is another water soluble B vitamin. It works with the other B vitamins. It is important for body growth and RBC production and helps in releasing energy from carbohydrates.

Food sources: lean meats, eggs, legumes, nuts, green leafy vegetables, dairy products and milk provide riboflavin in the diet. Breads and cereals are often fortified.

Because riboflavin is destroyed by exposure to light, foods should not be stored in glass containers that are exposed to light.

Deficiency of riboflavin is not common in the USA because the vitamin is plentiful in the food supply. Symptoms of significant deficiency includes sore throat, swelling of mucous membranes, mouth or lip sores, anemia, and skin disorders.



Christian Education News Addendum

In August there was a meeting to plan for Sunday School and other Christian Education activities at Springwater for the 2010-2011 church year.

The CE committee members for the coming church year are:

Peter Sturman (chair and session liaison), Renate Jeppeson, Carol Sturman, Deb Odell, Kathleen Souders, Jennifer Souders and Cindy Babikoff.

The first set of Sunday Schools will start on Sunday September 19th at 9:30 a.m. and continue until the start of Advent. Sunday worship will start at 10:30 a.m.

During Advent there will be intergenerational activities focused on the Advent season.

Thanks to all those involved in the CE planning process and special thanks to those who will be leading and teaching the Sunday School groups:

Eileen Parfrey, Peter Sturman, Deb Odell, Renate Jeppeson, Carol Sturman, Debbie Ingamells, Kathleen Souders and Jennifer Souders.

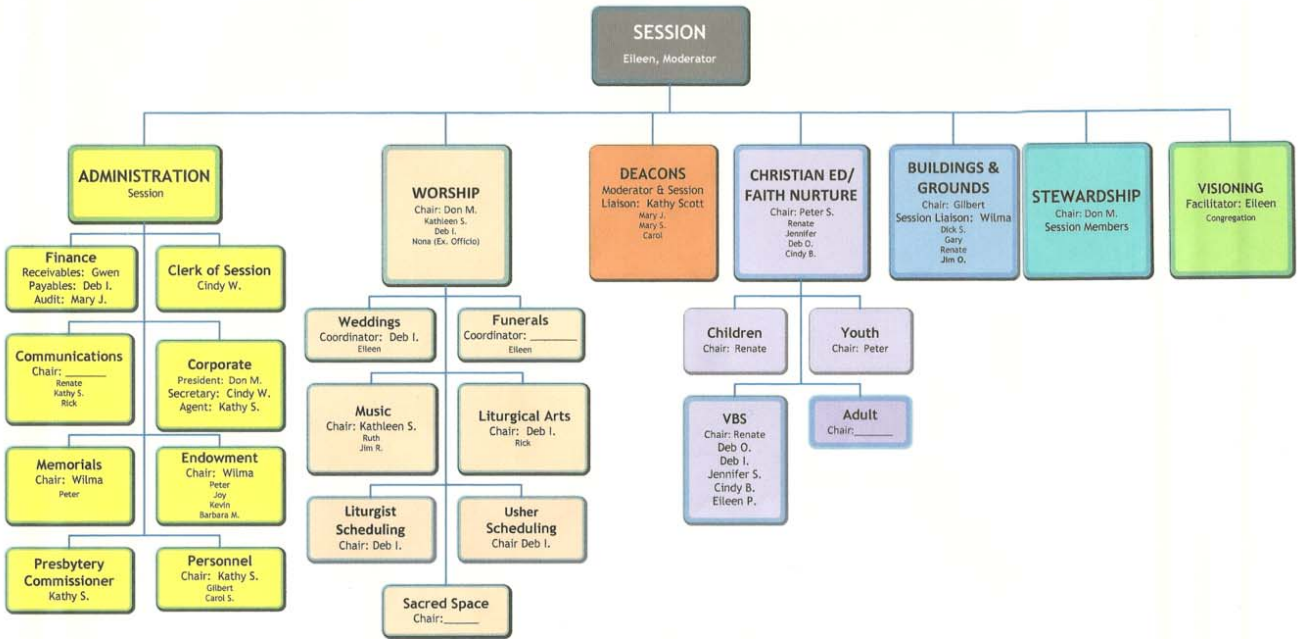
Springwater Youth Group

Starting on Friday October 1st at 7 p.m. and continuing on the first Friday of each month, there will be a meeting of the Springwater Youth Group open to church youth 7th –12th grade and their friends. Peter and Carol Sturman will lead these gatherings and Jennifer Souders will be providing and leading devotional activities at the start of each meeting.

Looking Ahead

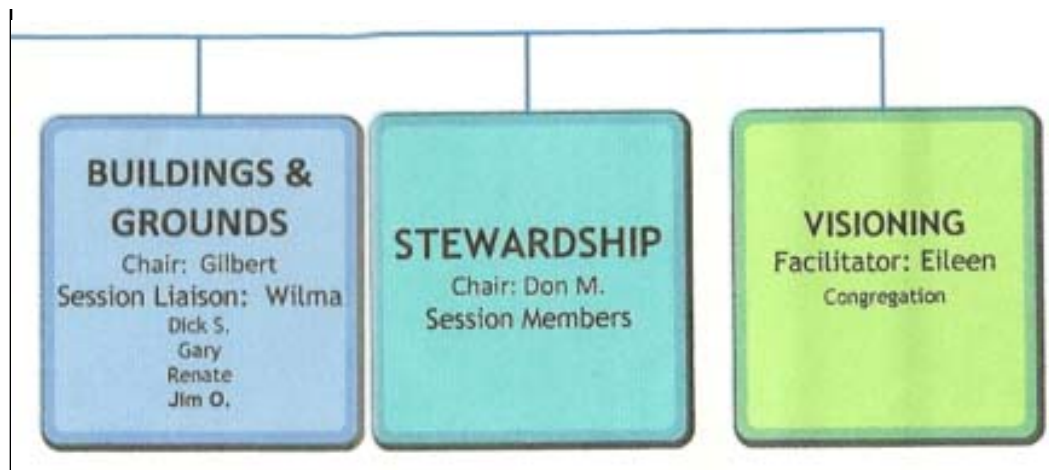
Starting in January 2011, Nona Shearer will be leading a class on the formation of the Bible.

We believe these activities provide a great path to faith enrichment at Springwater for you and all of us. We hope you will join us.



Springwater Presbyterian Church Committee Structure

You may have seen this chart on the bulletin board, or you may have missed it. Session has been getting organized. I know you can't read the details here, but we'll go over one section each month, so it will become clear who is responsible for what, who is on what committee and which session member is in charge of that committee. For instance, here we see that Gilbert Shibley is the chair of the Building & Grounds committee, but that Wilma is the session member responsible for it. If you have any concerns about our building or grounds, speak to someone on that committee. Also note that Don MacKinnon chairs the stewardship committee, but that all session members are on it. And the whole congregation is the visioning committee, with Eileen to guide us.





Join the youth group in a service project on September 11. The youth group and anyone who joins us will be painting the basement in preparation for a new year of Sunday School classes. Contact Renate Jeppeson, Peter or Carol Sturman if you want to help. Bring your brushes, rollers and buckets and we'll have a great time!



Lectionary Readings

September 5 (*Servant Leadership*): 2 Kings 5:1-27; Psalm 139:1-6, 13-18.

September 12 (*Round Up, Communion; Bring 'Em Back!*) Jeremiah 4:11-12, 22-28; Luke 15:1-10; Psalm 14.

September 19 (*Blessing the Animals*): Jeremiah 8:18-9:1; Luke 16:1-13; Psalm 79:1-9.

September 26 (*If It Can't Buy Happiness, Can It At Least Buy Contentment?*): 1 Timothy 6:6-19; Luke 16:19-31; Psalm 91:1-6, 14-16.

Springwater
Currents

[Return to website](#)

Springwater Presbyterian Church
24553 Springwater Rd
Estacada, OR 97023
503.630.5480
www.springwater-pres.org