

### May 2005

#### In this issue

Birthdays	1
Anniversaries	1
Pastor's Perspective	2
Lectionary	6
Youth Group	5

#### Sunday Schedule

Christian Education  
for all ages  
9:30-10:15am

Worship  
All ages are welcome  
10:30 - 11:45 am

Nursery & child care  
available during  
worship

May 8<sup>th</sup>  
2005



#### May

2	Thomas Webb
3	Braden Anderson
9	Jim Tomlin
19	Sheila Laschober
20	Kara Guttridge
20	Tabitha Souders
22	Jim Tedrow
23	John Leonard
24	Kenneth Fisher
27	Nikki Armstrong
29	Bruce Ryan
31	Kord Kirby



#### May

15	Mary & Kevin Kirby
17	Mary & Randy Johnson
24	Eunike & Tim Guttridge
28	Tiffany & Phillip Bittman

*Celebrating an  
Anniversary*



#### ATTENTION QUILTERS!

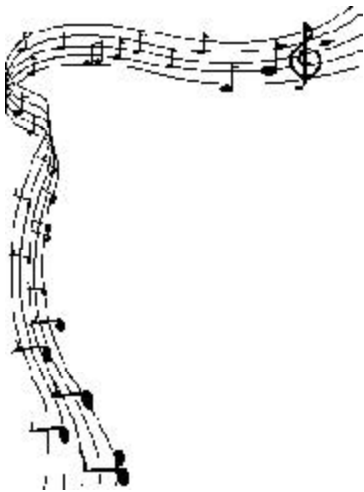
Contact Debbie Ingamells if you are interested in being in a church quilting group. No experience is necessary. Some equipment will be needed. You can reach Debbie at 503 631-7355 or by email at [ingamdeb@msn.com](mailto:ingamdeb@msn.com).

*Pentecost* Sunday  
May 15, 2005

Wear RED & come to the Potluck after church

## PASTOR'S PERSPECTIVE

We've added a Meditation Before Worship to the bulletin announcement to help people prepare for worship.



Church experts say that there are four generations of music lovers in our worship these days, and this is particularly true at Springwater, where we are blessed with an age span of nearly 100 years.

Whatever Happened to that Worship Survey?

Last summer when we ended worship early one Sunday to ask everyone in worship to answer some very open-ended questions about how they felt about Sunday worship. The questions and protocol we followed came from a national church resource group.

The first thing we noticed about the responses was that there was a full and wide range of opinion on every topic. Sometimes we've wondered if these folks were in the same worship service. For every person who loved a particular part of worship there was another with an equally strong dislike of the same thing.

Some Action

While the Worship Committee continues to revisit the responses, some actions have already been taken. For instance, we've added a Meditation Before Worship to the bulletin announcements, to help ~~people prepare for worship. We've been reading more from~~ The Message, even using excerpts in selected Calls to Worship and Confessions. Sermon manuscripts had been provided for some time, but we've put the notation of their availability in a more prominent place in the bulletin.

The jury is still out on how to do announcements. The point is to get information out, but there is no clear consensus on whether spoken or printed work best. We want to keep the primary focus of our Sunday mornings on worship.

Singing Our Theology

The topic with the greatest divergence of opinion was music. Ironically, this means what we are doing is effective. Musical taste is always very subjective, whether it's what we do in worship or which radio stations we tune to.

Church experts say that there are four generations of music lovers in our worship these days, and this is particularly true at Springwater, where we are blessed with an age span of nearly 100 years. People in their 70s prefer one type of hymn, people in their 40s prefer another. Not to mention what teens like! To attract and retain people of these wide age spans and hymn preferences, we try to include several "hymn generations" as a regular part of our worship.

Which means that no one will be happy all the time with our hymn selections. It is a challenge to come up with hymn selections that are at least familiar to a few people, while still remaining appropriate to the scripture and sermon. There are many people worshipping with us today who don't know a single hymn in our much-beloved Voice of Praise, while our newest book, Lift Up Your Hearts, seems hopelessly outdated to others.

More than a “musical break,” hymns are often a more effective means of getting a message into people’s hearts than sermons will ever be.

Hymns are said to be “sung theology.” Your pastor does not wish to waste a single opportunity to promote the gospel of Jesus Christ in a way that can be taken home and put to good use. She tries to choose hymns that reinforce the message of the scripture for the day. More than a “musical break,” hymns are often a more effective means of getting a message into people’s hearts than sermons will ever be.

#### It’s a Challenge

Coming to grips with the worship survey has been challenging for the Worship Committee. We see that there are many subjects that still need addressing, and we continue to keep at it, hoping you will give us some feedback on the changes we’ve made.

See you in church.



## We are building a labyrinth!

As a part of our outdoor building project, we are planning a labyrinth in the meditation garden. A labyrinth is not a maze. A maze is a puzzle where people get lost. You cannot get lost in a labyrinth. A labyrinth has only one path into the center and the same path back out. Our labyrinth will be based on the design of the labyrinth in Chartres Cathedral in France. During the middle ages, it was common for people to go on pilgrimages for their faith. Ideally, they would go to the Holy Land, but when people didn’t have money for extensive traveling, it is thought they would travel to a Cathedral like Chartres and walk the labyrinth as their pilgrimage. In recent years the labyrinth has become popular as a tool for feeling closer to God and to help focus on God.



Our plan is to have a packed gravel labyrinth path and the areas between the paths to be planted to various plants that the labyrinth committee is selecting, based on their height, ease of maintenance, time of blooming, etc. In the next couple of months the committee will be showing you the plans and asking for volunteers to help build the labyrinth or for donations of money or plants. We will also be planning a dedication ceremony and opportunities for guidance in walking the labyrinth.



## Estacada Family Resource Center

Currently needs more of the following:

Apple sauce, Pears, bar soap, sugar, cake mix and Jiffy mixes.

**EFRC always needs donations of MONEY and TIME**

What you put  
into church is  
what you will  
get out of it.



## Dates & Times to Remember

Taizé Service  
Friday, May 13th-7:30pm

Youth Group meets at  
6:00pm & attends Taizé  
and bowls after worship

Prayer Group  
Tuesday afternoons  
at 2:00pm at church  
All are welcome

Women's Bible Study  
Wednesdays at 7:00pm

Pastor's office hours  
Tuesdays at 4:30-6:30pm

## Connectedness and Hospitality

Experts on church life tell us that, if you can enter church on a Sunday, call six to eight people by name, and feel like you know something about them, then you are going to feel like this church is "home" to you. If you can't do that, you will struggle to feel connected, and may quickly decide to try some other place of worship.

You can help newcomers feel at home at Springwater. Wear your nametag each week. Introduce yourself to visitors. Call them by name. Invite them to tell you a little about themselves, share something about yourself. Help them to use our bulletin.

Another way to increase "connectedness" at church is to get to know each other outside of church. Invite someone home with you after church for lunch on Sunday. Stick around for Ramblers practice on the first Sunday of the month. Join the women's Bible study on Wednesday evenings at church. Ask two or three others to meet you for breakfast on Saturday. Plan on helping out at the spring clean up day on May 7. Volunteer to provide child care during worship.

It's an old saying, but it's true: what you put into church is what you will get out of it. If you want a friendly church, you have to be that friend.

## Stewardship of your church Building

Mark your calendar:

Saturday May 7th Spring Cleaning Work Party 9 AM

Join us for a morning of stewardship, fellowship, and fun! Work indoors or out- choose your project: windows, floors, cobweb removal, dusting, weeding- you name it! If you see an area of concern, come fix it! See Renate with questions or suggestions. Renate will provide the chili- you bring finger foods for fellowship when we're done!

Help keep your church clean!



David Laschober has volunteered to clean the church every Monday (thanks David!). If you use the church during the week, please clean up after yourselves. It's always wonderful to enter a neat and clean church on Sunday morning.

Touchpoints shares reflections and creative responses to God and God's Word.

Encounters With God is this years theme

Youth Group meets:

2nd Fri. at 6:00 pm  
Includes Taize service

and

4th Sunday after church



## Writers, submit!

Touchpoints is the Presbytery's publication which shares reflections and creative responses to God and God's Word. Submissions are currently being accepted for the 2005 issue, Encounters With God. Where do we "find" God? How are people changed (or not) by such encounters? Biblical or personal experiences are appropriate.

Send essays, sermons, stories (limit prose to 2,500 words) and poems (limit to 50 lines) to Shirley Tormey, editor at 8313 SW Fourth Avenue, Portland, OR 97219. If you wish to submit your work electronically, send in Word Perfect format to [Nekahr@aol.com](mailto:Nekahr@aol.com).

Guidelines. While the purpose of Touchpoints is to facilitate dialogue between Presbyterians, we cannot publish personal opinions solely for the purpose of stirring up a discussion. Alternative viewpoints are welcome, however they must be well-supported primarily by Scripture and secondarily by church teachings.

## Youth Group Update - Spring 2005

The Springwater Youth Group has been slurpin', ringin', and rollin' the second Friday of every month! In other words sharing a soup supper, playing hand chimes for the Taize Prayer Service, and going late night glow bowling to round out the evenings activities.

We know the kids can eat and bowl--well, some of us think we can bowl, but, that can be proven otherwise on any given month !! These kids are doing a great job learning the hand chimes and we would love it if you would come join us for the Taize Prayer Service from 7:30 - 8:30 pm the second Friday of the month.

As this newsletter goes to print, the Youth Group will be up early (for teens) on Saturday, April 23, taking part in a local Earth Day event. We will be picking up garbage in the Promontory Park area up river. Earth Day is about tending to Creation. We aim to celebrate God's gift of Creation and humbly offer our time and talents to clean up after those "lost in the wilderness" of a throwaway society--where to some, the world is a garbage can.

Thank you for your prayers and support, from the Youth Group leaders, *Stephen, Peter, Jim, and Cindy*

## One Great Hour of Sharing Update

The total given to our One Great Hour of Sharing special offering this year was \$1,020.29. This amount is somewhat less than last year but significantly more than any previous year. And when you add the \$370 given to disaster relief earlier in the year the total is more than was given last year. You are a truly generous congregation.

Be Watching  
for a presentation  
on  
charitable giving  
and estate  
planning



## Your Name Isn't Rockefeller, So What?

You don't have to be rich to help provide an endowment for your church or any other institution you desire to help. And in helping your church, you can also help yourself.

In a very basic, oversimplified form, here is how it works. You donate money through the Presbyterian Foundation. They invest it and provide you with a periodic income, which is pretty nice to have. When you graduate from life, most of what you donated goes to your specified charity, your church (we hope). And the whole thing comes with tax benefits, which are very important since I am writing this just after April 15.

The BOV Finance Committee will be sponsoring a presentation on charitable giving and estate planning soon. Stay tuned. Want more information? You can talk to me, Dick Scott.

Editor's Note: The Presbyterian Foundation has been helping individuals, churches, Presbyteries, Synods and the General Assembly for many years. Here's a brief explanation of what they do:

### The Mission of the Presbyterian Foundation

A vital part of the Presbyterian Church (U.S.A.), the Foundation attracts, cultivates, and manages financial resources of individuals and institutions to serve Christ's mission.

Your gift is distributed to the charitable beneficiary of your choice; the Foundation does not determine the recipient of your gift. You can designate any Presbyterian Church or Presbyterian-related organization or charity. You may also determine if the charitable beneficiary will be allowed to use your gift for the greatest need or you can specify the use of the gift.

## Lectionary Readings

May 1 (Something Else to Anticipate): John 14:15-21; 1 Peter 3:13-22; Psalm 66:8-20

May 8 (Is It Time Yet?): Acts 1:6-14; John 17:1-11; Psalm 68:1-10, 32-35

May 15 (Pentecost): Acts 2:1-21; John 20:19-23; Psalm 104:24-34, 35b

May 22 (Trinity Sunday): Genesis 1:1-2:4a ; 2 Corinthians 13:11-13; Matthew 28:16-20 Psalm 8

May 29 (Memorial Day Weekend): Genesis 6:9-22, 7:24, 8:14-19; Romans 1:16-17, 3:22b-28 (29-31); Matthew 7:21-29; Psalm 46





Your present Mission Outreach and Interpretation Committee has a special charge, of mission discernment, looking carefully at how much we're doing, and how well we're doing it.

## How many ways can you spell MISSION ?

An astute member of the congregation has observed a certain "mission creep". He says, "I get confused ...Mission Study ...Mission Committee ...mission giving ...". The Mission Study committee helps the congregation look at its direction, resources, and Call to service for the next three to five years, "Why this church, in this place, for the greater glory of God? "

The Mission Committee, a session committee, helps the congregation in specific endeavors of service, from organizing special offerings for national or international mission, such as the One Great Hour of Sharing just completed, to collecting the food and household supplies for the Estacada Family Resource Center, just four miles away.

For a small church, we have taken on several giving projects, and we are very generous. Your Mission Outreach and Interpretation Committee has a special task, of mission discernment, looking carefully at what we're doing, and how well we're doing it. Of course, your perspective is important too. In the weeks after Easter, we will have a series of Moment for Mission presentations of our local efforts. The first part will be those things we do for our Hunger Ministry, such as Heifer International and the Estacada Family Resource Center. After each series of presentations, we will come back with a poll about the value of the investment of time and effort, and whether or not our projects fit with your understanding of what the Gospel directs us to do.

In the meantime, all of the current Mission activities will continue. Please continue to bring your food and household items for the big red tub, and celebrate birthdays & anniversaries with your pennies, dimes or quarters.

## Financial Report as of March 31, 2005

Three months or 25% of the year has come and gone and our General Ministry & Mission Funds income is keeping pace with our General Ministry & Mission Funds expenses. Here are the numbers:

General Ministry & Mission Funds Income	\$20,825.94	25% of expected
General Ministry & Mission Funds Expenses	<u>19,689.03</u>	24% of budget
Income minus Expenses	\$596.91	



Most of our General Ministry & Mission Fund income comes from your pledges. It makes a real difference to us if you can keep your pledge amount current.

So far 19 members have donated their per capita of \$21 per member. If every member came through we would have \$1200 more to spend on the ministry and mission of this congregation.

## Meet our new Session Member - Renate Jeppeson

Renate grew up right here in the Estacada/Eagle Creek area. She has fond memories of Springwater church youth group activities with the Fishers and others.

Renate earned a bachelor's degree in biology from Lewis & Clark College in Portland and worked as a chemist for 10 years, doing water testing. Then, she got a Master's degree in Environmental Science from Oregon Graduate Institute.

She enjoys birding and hiking, especially in the Columbia River Gorge to see wildflowers, and likes to identify things. Her favorite class at OGI was soil science. She says she was amazed that different kinds of soils have names, and that there are huge books to help identify them.

Renate met her husband, Greg, in high school. Greg works for a construction company. They have two wonderful children that everyone knows and loves, Neal and Adelia. Neal is 4 and attends Red Barn Preschool. Adelia is one and a half, loves dogs, cats and going outside.

As Buildings And Grounds chairperson, Renate hopes to improve our church building for the safety and enjoyment of our children. A basement exit door is her first, immediate goal.

Remember the Spring Work Day on Saturday, May 7th



Springwater Presbyterian Church  
24553 S. Springwater Rd.  
Estacada, Oregon 97023  
Forward & Address Correction